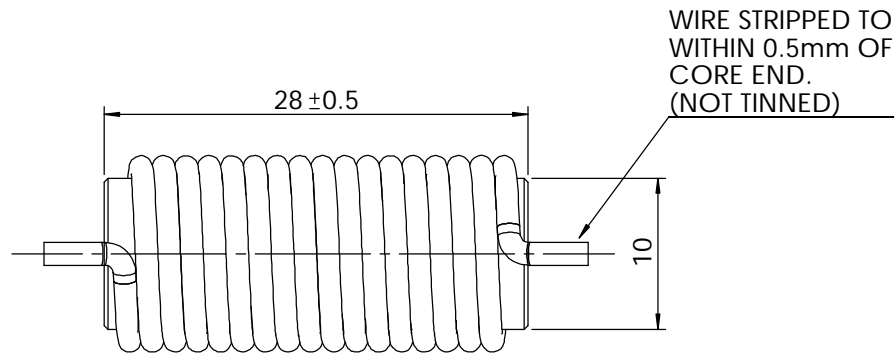
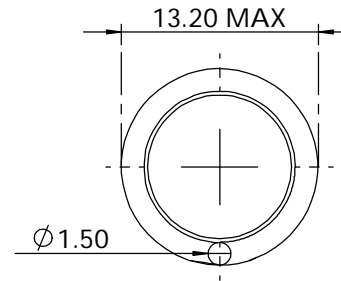
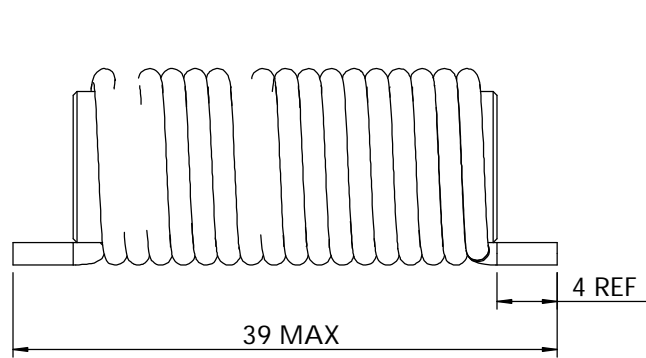


REVISIONS				
ZONE	REV.	DESCRIPTION	DATE	APPROVED



SPECIFICATION

L = 10uH ±2uH @10A
 Idc = 14A max
 Rdc = 13.5 Ohm max.
 Operating Temperature = -40 to +125
 Turns = 17 REF
 Wire = 15 AWG min.

PROPRIETARY AND CONFIDENTIAL THE INFORMATION CONTAINED IN THIS DRAWING IS THE SOLE PROPERTY OF AIC TECHNOLOGY (EUROPE) LTD. ANY REPRODUCTION IN PART OR AS A WHOLE WITHOUT THE WRITTEN PERMISSION OF AIC TECHNOLOGY (EUROPE) LTD IS STRICTLY PROHIBITED.	NAME	DATE	AIC Technology (Europe) Ltd. WWW.AICEUROPE.COM		
	DRAWN	C WALKER			11/05
	CHECKED	G ROBINSON	11/05	TITLE: 14A CHOKE FOR BRUSHLESS DC MOTOR, LC FILTER >150kHz	
	ENG APPR.				
MATERIAL	--	UNLESS OTHERWISE SPECIFIED DIMENSIONS ARE IN MILLIMETERS TOLERANCES: ONE PLACE DECIMAL +/-0.3 TWO PLACE DECIMAL +/-0.13 ANGLE +/-1 DEGREE		SIZE A	
FINISH	--	DO NOT SCALE DRAWING		DWG. NO. AIC10821 SCALE:2:1 REV. 01	
			REV '0' = PRELIMINARY DATA	SHEET 1 OF 1	